

AGENDA

Meeting: Bradford-on-Avon Area Board
Place: St Laurence School, Ashley Road, Bradford on Avon, BA15 1DZ
Date: Wednesday 7 September 2022
Time: 7.00 pm

Including the Parishes of Atworth, Bradford on Avon, Holt, Limpley Stoke, Winsley, Monkton Farleigh, Staverton, South Wraxall, Wingfield, Westwood

The Area Board welcomes and invites contributions from members of the public

The chairman will try to ensure that everyone who wishes to speak will have the opportunity to do so

If you have any requirements that would make your attendance at the meeting easier, please contact your Democratic Services Officer

Please direct any enquiries on this Agenda to Kevin Fielding, direct line 01249 706612 or email kevin.fielding@wiltshire.gov.uk

All the papers connected with this meeting are available on the Council's website at www.wiltshire.gov.uk

Press enquiries to Communications on direct lines (01225) 713114 / 713115

Wiltshire Councillors

Cllr Sarah Gibson - Bradford on Avon South (Chairman)
Cllr Johnny Kidney - Winsley and Westwood
Cllr Trevor Carbin - Holt and Staverton
Cllr Tim Trimble - Bradford-on-Avon North

Recording and Broadcasting Information

Wiltshire Council may record this meeting for live and/or subsequent broadcast. At the start of the meeting, the Chairman will confirm if all or part of the meeting is being recorded. The images and sound recordings may also be used for training purposes within the Council.

By submitting a statement or question for an online meeting you are consenting that you will be recorded presenting this, or this may be presented by an officer during the meeting, and will be available on the public record. The meeting may also be recorded by the press or members of the public.

Any person or organisation choosing to film, record or broadcast any meeting of the Council, its Cabinet or committees is responsible for any claims or other liability resulting from them so doing and by choosing to film, record or broadcast proceedings they accept that they are required to indemnify the Council, its members and officers in relation to any such claims or liabilities.

Details of the Council's Guidance on the Recording and Webcasting of Meetings is available on request. Our privacy policy can be found [here](#).

Public Participation

Please see the agenda list on following pages for details of deadlines for submission of questions and statements for this meeting.

For extended details on meeting procedure, submission and scope of questions and other matters, please consult [Part 4 of the council's constitution](#).

The full constitution can be found at [this link](#).

For assistance on these and other matters please contact the officer named above for details

Items to be considered	Time
<p>1 Chairman's Welcome, Introduction and Announcements (<i>Pages 1 - 8</i>)</p> <p>Chairman's Announcements:</p> <ul style="list-style-type: none"> • Electric Vehicle Charging Points webinar - Wednesday 14 September 2022 • Annual Canvass • Engagement and Partnership Team Structure • Post 16 Skills and Participation Offer • Transport Town Centre Cycle Networks Consultation <p>https://www.wiltshire.gov.uk/transport-town-cycle-networks</p>	<p>9:00pm</p>
<p>2 Apologies for Absence</p>	
<p>3 Minutes (<i>Pages 9 - 16</i>)</p> <p>To approve and sign as a correct record the minutes of the meeting held on Wednesday 8 June 2022</p>	
<p>4 Declarations of Interest</p> <p>To receive any declarations of disclosable interests or dispensations granted by the Standards Committee</p>	
<p>5 Partner Updates (<i>Pages 17 - 32</i>)</p> <p>Wiltshire Police</p> <p>Dorset & Wiltshire Fire and Rescue Service</p> <ul style="list-style-type: none"> • Dorset & Wiltshire Fire and Rescue Service presented the latest video update at their recent Authority meeting. This edition summarised some of the notable incidents that the service had attended, and the good work being achieved across the Service in the last three months. <p>Public video: https://youtu.be/4AFZoVIszBQ</p>	

NHS & Healthwatch

Bradford on Avon Town Council

Parish Councils

Climate Friendly Bradford

Wiltshire Music Centre

Streets Ahead

6 **Community Grants and Funding Requests**

Bradford on Avon Rowing Club Boathouse Development requesting £5,000

7 **Working Group Review**

- LHFIGs
- Health and Wellbeing
- Local Youth Network

8 **Future Meeting Dates**

- 2 November 2022 - St Laurence School
- 22 February 2023 - St Margaret's Hall

9 **Close**

9:00pm

Electric Vehicle Charging Points webinar

When: Wednesday 14th September 2022 at 5.30pm on Microsoft Teams

An opportunity to learn more about Wiltshire Council's approach to electric vehicle (EV) charging infrastructure

- Current EV charging infrastructure plan
- Next EV strategy
- Grants and the Office of Low Emissions Vehicles (OLEV) process
- An opportunity to ask questions and understand how to overcome any barriers

Please email climate@wiltshire.gov.uk to book a place on the webinar and receive the link

Area Board Briefing Note – Annual Canvass

Service:	Electoral Services
Date prepared:	20 June 2022
Further enquiries to:	Caroline Rudland Head of Electoral Services
Direct contact:	elections@wiltshire.gov.uk

Each year the statutory Annual Canvass process takes place between June - November. This is an audit to ensure the electoral register is accurate and all those people entitled to vote are registered.

Forms will be sent to all properties in July. We encourage everyone to check the information is correct and use the contact details on the form to update their details as appropriate, preferable by using the online or telephone service as this is a quicker and efficient option.

Some households will be **required** to respond where other households only need to if there is a change in the information shown on the form. Full details will be explained on the form.

If you can disseminate the information within your parishes, and encourage households to respond as soon as possible, it will save further reminders being sent.

The final process for those households that do not respond to the initial and reminder form, is to employ canvassers to door knock to encourage a response. This will take place during September.

However, hopefully the number of properties to door knock can be significantly reduced if households respond to the forms so, please encourage your communities to do so.

Briefing Note

Engagement and Partnerships Team Structure

August 2022

Service : *Leisure, Culture and Communities*
Further Enquiries to: *Rhys Schell, Service Manager, Engagement and Partnerships*
Date Prepared: 22/08/2022
Direct contact: rhys.schell@wiltshire.gov.uk

Engagement and Partnerships Team

The new staffing structure for the Engagement and Partnerships team comes into place from 1 September and introduces three officer levels of support to local communities and Area Boards. Officers will work collaboratively across community areas, however, locally named contacts remain available for Councillors, partners and residents to directly engage with. The service will work with communities in an innovative and proactive way and empower them to do even more for themselves and to deliver to the Wiltshire Council Business Plan. A brief overview of the respective duties are set out below.

- **Strategic Engagement and Partnerships Manager**

The six Strategic Engagement and Partnership Managers (SEPMs) will hold overall responsibility for Area Board delivery and the development of the local Area Board work plan in conjunction with the local Councillors. The SEPMs are the main points of contact for local Councillors, strategic partners, community volunteers and leaders. Each SEPM will lead an organisational theme, which includes children and young people, equality, diversity and inclusion, the environment, economic regeneration and older and vulnerable adults, however, this is not an exhaustive list and will be reviewed regularly. The SEPMs will drive this area forwards across communities and develop exciting link ups between council services and the community to provide excellent information, insight and evidence sharing between parties.

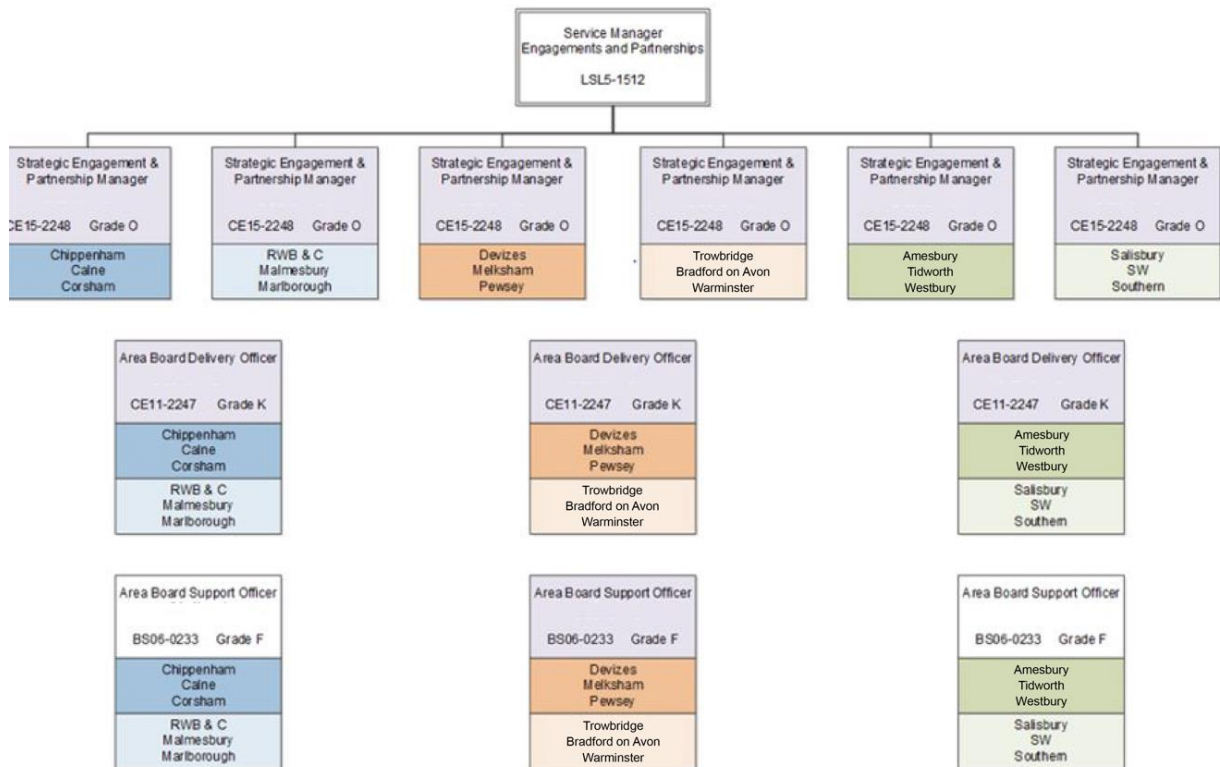
- **Area Board Delivery Officer**

Three dedicated officers that facilitate and support Area Board delivery in an innovative way. The delivery officers will build exceptional relationships with the voluntary and community sector and other key local partners to facilitate projects and initiatives that support the objectives of the Area Board work plans. They will be actively involved in Area Board business meetings, engagement activities, events and working groups to deliver exceptional local and organisational outcomes.

- **Area Board Support Officer**

Three Area Board Support Officers will oversee and effectively implement all grant funding processes. This includes eligibility assessment, reporting, payments, impact analysis, budget monitoring and audit. The Area Board Support Officers will collate and assess data on behalf of the team, facilitate regular communication through online platforms such as Our Community Matters and respond to resident enquiries. They report to the Strategic Engagement and Partnership Managers.

Structure Visual



The post holders are as follows:

- Andrew Jack, (01225 713109 or andrew.jack@wiltshire.gov.uk) Strategic Engagement and Partnerships Manager - Malmesbury, Marlborough, Royal Wootton Bassett and Cricklade
- Ros Griffiths, (01225 718372 or ros.griffiths@wiltshire.gov.uk) Strategic Engagement and Partnerships Manager - Corsham, Chippenham and Calne
- Liam Cripps, (01225 713143 or liam.cripps@wiltshire.gov.uk) Strategic Engagement and Partnerships Manager - Bradford on Avon, Trowbridge and Warminster
- Richard Rogers, (07771547522 or richard.rogers@wiltshire.gov.uk) Strategic Engagement and Partnerships Manager - Melksham, Devizes and Pewsey
- Graeme Morrison, (01225 713573 or graeme.morrison@wiltshire.gov.uk), Strategic Engagement and Partnerships Manager - Westbury, Amesbury, Tidworth
- Karen Linaker, (01722 434697 or karen.linaker@wiltshire.gov.uk) Strategic Engagement and Partnerships Manager - South West, Salisbury, Southern Wiltshire
- David Holker, Area Board Support Officer (North)
- Catherine Russell, Area Board Support Officer (South)

The three vacant Area Board Delivery Officer roles and the central Area Board Support Officer role are currently being recruited to.

Briefing prepared by: Rhys Schell, Service Manager, Engagement and Partnerships

Report Date: 22/08/2022

Area Board Briefing Note – Post 16 Skills and Participation Offer

Service:	Post 16 Skills and Participation
Date prepared:	8th August 2022
Further enquiries to:	Catherine Brooks – Employment and Skills Officer
Direct contact:	Catherine.brooks@wiltshire.gov.uk

The Post 16 Skills and Participation team are on hand to support young people aged 16 – 17 years who are NEET (Not in Education, Employment or Training) or at risk of becoming NEET.

The EET (Education, Employment or Training) service will work 1-1 with young people to support them and help them understand the local offer, whether that is Sixth Form, College, Traineeships or Apprenticeships. Or other local programmes which offer employability support, confidence building, life skills, functional skills in Maths and English for example.

With the aim to re-engage them back into Education, Employment or Training.

You can find more information and how to refer a young person – or yourself on our Work Wiltshire website – www.workwiltshire.co.uk/young

The Work Wiltshire website also holds a vast amount of information around all things Employment and Skills, for the wider community, no matter your age for example apprenticeship information or for those with barriers to work and support for Ukraine refugees.

Follow our Social Media pages for fresh content and local opportunities.

Twitter - @WorkWiltshire

Instagram - @young_workwiltshire – for young people

Any questions or more information? Please email Catherine Brooks, Employment and Skills Officer

Catherine.brooks@wiltshire.gov.uk

MINUTES

Meeting: Bradford-on-Avon Area Board
Place: St Margaret's Hall, St Margaret's Street, Bradford on Avon
Date: 8 June 2022
Start Time: 7.00 pm
Finish Time: 8.45 pm

Please direct any enquiries on these minutes to:

Kevin Fielding,(Tel): 01249 706612 or (e-mail) kevin.fielding@wiltshire.gov.uk

Papers available on the Council's website at www.wiltshire.gov.uk

In Attendance:

Wiltshire Councillors

Cllr Trevor Carbin, Cllr Sarah Gibson (Chairman), Cllr Johnny Kidney (Vice-Chairman) and Cllr Tim Trimble

Wiltshire Council Officers

Ros Griffiths – Community Engagement Manager
Kevin Fielding – Democratic Services Manager

Total in attendance: 14

<u>Minute No.</u>	<u>Summary of Issues Discussed and Decision</u>
33	<u>Election of the Chairman</u> Cllr Sarah Gibson was voted Chairman for 2022/23.
34	<u>Election of the Vice-Chairman</u> Cllr Johnny Kidney was voted Vice-Chairman for 2022/23.
35	<u>Chairman's Welcome, Introduction and Announcements</u> The following Chairman's Announcements contained in the agenda pack were noted: <ul style="list-style-type: none"> • Solar Together Wiltshire • Queens Jubilee celebrations • Recruitment of hackney carriage private hire drivers • Foster Care Fortnight
36	<u>Apologies for Absence</u> There were none.
37	<u>Minutes</u> Decision The minutes of the meeting held on Wednesday 23 February 2022 were signed as the correct record.
38	<u>Declarations of Interest</u> There were none.
39	<u>Community Grants and Funding Requests</u> The following funding requests were awarded:

	<p>Staverton Rangers awarded £1,650 for replacement goal posts</p> <p>Winsley PC awarded £5,000 for replacing aging play equipment</p>
40	<p><u>Appointment to Outside Bodies and Non-Priority Working Groups</u></p> <p>The following appointments were made for Area Board representatives to Outside Bodies and Non-Priority Working Groups</p> <ul style="list-style-type: none"> • Local Highway and Footpath Improvement Group – Cllr Tim Trimble with all members invited to attend • Bradford on Avon Streets Ahead/ Air Quality Alliance – Cllr Tim Trimble & Cllr Johnny Kidney
41	<p><u>Local Priorities update and appointment to Priority Working Groups</u></p> <p>Ros Griffiths – Community Engagement Manager gave a brief overview of the highlights of 2021/22 Priorities.</p> <p>It was agreed to appoint Area Board representatives to the following Priority Working Groups:</p> <ul style="list-style-type: none"> • Bradford on Avon Health and Wellbeing Group – Cllr Johnny Kidney • Bradford on Avon Local Youth Network – Cllr Sarah Gibson • Bradford on Avon Business – Cllr Sarah Gibson & Cllr Johnny Kidney
42	<p><u>Electric Bus Proposals</u></p> <p>Cllr Tim Trimble outlined discussions with the Big Lemon Bus Company which could see an electric bus service rolled out in the Bradford on Avon community area.</p> <p>Points made included:</p> <ul style="list-style-type: none"> • That there was scope for an electric bus service in Bradford on Avon. • That several potential bus depots/charging points had been identified. • That the Big Lemon Bus Company were looking to partner with a local bus company to roll out such a service. • That a meeting was to be held on the 9 June to discuss proposals.

	<ul style="list-style-type: none"> • That the proposed buses had a range of some 300 kilometres on one charge. • That this service could well encourage people to use buses more as a green alternative. • That Cllr Trimble was looking to promote a survey through the Area Board. • That Westbury Town Council were also interested in running a similar service. • Cllr Trimble had also discussed a shared e-car & e-bike scheme with Wiltshire Council – a survey would also be needed for this. <p>Decision</p> <ul style="list-style-type: none"> • That the Bradford on Avon Area Board agreed to a survey throughout the Bradford on Avon community area to gauge opinion on the proposed electric bus service. <p>The Chairman thanked Cllr Trimble for outlining the proposals.</p>
43	<p><u>Partner Updates</u></p> <p>The following updates were noted:</p> <p>Wiltshire Police – Russell Holland – Dep PCC</p> <p>Points made included:</p> <ul style="list-style-type: none"> • Ongoing work re rural crime and drug related issues. • Knife and gun amnesty recently carried out. • Speeding – new speed cameras being rolled out across Wiltshire. <p>Dorset & Wiltshire Fire and Rescue Service – Written update Station Manager Dave Geddes in attendance</p> <p>Points made included:</p> <ul style="list-style-type: none"> • Safe and Well visits were being carried out across Wiltshire. • Actively recruiting on-call firefighters.

	<ul style="list-style-type: none"> • Bonfires and Water Safety during the Summer. • That the Dorset & Wiltshire Fire and Rescue Service had supplied equipment to the Ukraine. <p>NHS & Healthwatch – Written updates</p> <p>Bradford on Avon Town Council</p> <p>Points made included:</p> <ul style="list-style-type: none"> • That Bradford had enjoyed a successful Jubilee weekend. • That Wiltshire Council had now responded to the Town Council traffic survey. • That the asset transfer has now been completed from Wiltshire Council. • That lots of activities were planned for the Big Green Week. • That some 40 Ukrainian nationals were now established in the Bradford on Avon community area. <p>Winsley Parish Council</p> <p>Points made included:</p> <ul style="list-style-type: none"> • That the Parish Council had held their annual meeting back in May. • That the Winsley community shop had now sadly closed, may look at the community to take it on if a new buyer cannot be found. <p>Climate Friendly Bradford – Written update</p> <p>Streets Ahead – Written update</p> <p>The Chairman thanked everyone for their updates.</p>
44	<p><u>Working Group Updates</u></p> <p>Local Highway and Footpath Improvement Group – Cllr Tim Trimble</p>

	<ul style="list-style-type: none"> • That works on Station Approach and the Snicket were now completed. • The minutes of the CATG meeting held on the 25 April 2022 were noted. <p>Health and Wellbeing – Cllr Johnny Kidney</p> <ul style="list-style-type: none"> • Looking at the end of July for the next in person meeting. • That were still concerns re primary care access. <p>Local Youth Network - Cllr Sarah Gibson</p> <ul style="list-style-type: none"> • That it was hoped to get a meeting arranged during July to meet with local groups.
45	<p><u>Review of Area Boards</u></p> <p>Ros Griffiths – Community Engagement Manager outlined the Area Board review and the changes in the grants criteria.</p> <p>Area Board Review</p> <p>That the Area Board model was introduced in 2009 and had delivered significant progress to develop stronger, more resilient and connected communities since its inception.</p> <p>That the overall objectives of the Area Boards remain consistent today however, in an operating model more than 12 years old it was natural that certain elements were subject of review and refresh to ensure they were meeting the current needs of local communities.</p> <p>That the aspiration of the review was to build on the excellent practice and evident success of the Area Boards and to address areas where there was inconsistency in practice and approach.</p> <p>That the number of boards, overall format, structure and local autonomy were not part of the review.</p> <p>That a period of research, analysis and review of data between the Cabinet Member, Portfolio Holder and key Officers had been carried out.</p> <p>That an Overview and Scrutiny process followed between January – March 2022, had resulted in 24 recommendations.</p> <p>These were adopted into a single member decision paper on Area Board arrangements which was ratified on the 6 May 2022.</p>

	<p>See below, weblink for the 2022 Area Board handbook</p> <p>https://www.wiltshire.gov.uk/media/9182/Area-Board-Handbook-2022/pdf/Area_Boards_Handbook_2022.pdf?m=637878906465170000</p> <p>Changes in the Grants Criteria</p> <p>That funding was available to voluntary and community sector organisations that could show a need for financial support up to a total of £5,000. Town and Parish councils were eligible to apply for revenue funding, in respect of Youth Grants or Older and Vulnerable Adult Grants, where they were able to show a need for financial support.</p> <p>Matched funding requirement had reduced from £1,000 to £500.</p> <p>That applications must be received at least four weeks before an Area Board.</p> <p>That applications must highlight how they were meeting two aims of WC Business Plan and an Area Board local priority – grant system would reflect this.</p> <p>That an organisation could apply for a maximum of two projects/ bids per annum across all eighteen boards. Each project/ bid could request funding from up to three boards.</p>
46	<p><u>Future Meeting Dates</u></p> <ul style="list-style-type: none"> • 7 September 2022 - St Margaret’s Hall (to be confirmed) • 2 November 2022 - St Laurence School • 22 February 2023 - St Margaret’s Hall
47	<p><u>Close</u></p>

Update for Bradford on Avon Area Board

Name of Parish/Town Council	Wilts Police
Date of Area Board Meeting	7 September 2022

Update for Bradford on Avon Area Board

Headlines/Key successes

- An 18 year old male has been arrested in connection with a series of incidents of Dangerous Driving, involving an Electric Motorcycle being ridden around the Town. The Motorcycle has been seized and the individual will be prosecuted for a number of offences.

- A Lorry Driver was Reported to Court for Careless Driving, following a flagrant breach of the Weight Restriction on Ashley Lane. Further Fixed Penalty Notices have been issued for the same.

- A 23 year old male has been Charged with Attempted Robbery after a very random and unprovoked attack near the Co-Op on Winsley Road. Two PCSO's from Trowbridge staged a ½ mile foot chase and caught the male near Great Ashley. He was Charged and Remanded to Court.

Projects

- We've been in liaison with Wiltshire Council over the road closure between Bradford and Winsley, trying to identify any alterations to the current setup which might help. By and large, we agreed that the solution implemented, was the "least worst option".

- At this time; our other Bradford on Avon Priorities, relate to identifiable "Repeat Victims", so they aren't suitable for publication due to their sensitivity.

-

Forthcoming events/Diary dates

-

-

-

Signed: James Twyford

Update for Bradford on Avon Area Board

Date: 24/08/22

Update for Wiltshire Area Boards

June 2022

BSW ICS update

The Health and Care Act received Royal Assent in April 2022 with changes coming into force from 1 July 2022.

At the heart of the changes brought about by the Act is the formalisation of integrated care systems (ICSs) and the dissolution of Clinical Commissioning Groups (CCGs). Bath and North East Somerset will be part of the Banes, Swindon and Wiltshire (BSW) ICS. ICSs are partnerships that bring providers and commissioners of NHS services together with local authorities and other local partners to collectively plan health and care services to meet the needs of their local population. There is a strong emphasis on working collaboratively together, instead of competition.

BSW ICS will be made up of two parts: an integrated care board (ICB) and an integrated care partnership (ICP). ICBs will be tasked with the commissioning and oversight of most NHS services and will be accountable to NHS England for NHS spending and performance. ICPs will bring together a wider range of partners, not just the NHS, to develop a plan to address the broader health, public health, and social care needs of the population. ICSs have the potential to reach beyond the NHS to work alongside local authorities and other partners to address the wider determinants of health. As part of the establishment of the new Integrated Care System at BSW, the Bath and North East Somerset Integrated Care Alliance (ICA) also goes live on 1 July 2022.

Wiltshire Place Director

Fiona Slevin-Brown has been confirmed as the new Director of Place for Wiltshire and will join the Bath and North East Somerset, Swindon and Wiltshire Integrated Care Board (BSW ICB).

Fiona is currently Managing Director and Integrated Care System Lead for Urgent and Emergency Care in the Frimley Health and Care ICS, she is a registered clinician, who joined the NHS in 1992. She served as Deputy Director of Clinical Services and Head of Business Development at NHS Berkshire West before taking the role of Deputy Managing Director and Chief Operating Officer for Community Health Services. This was followed by an Interim Managing Director position with Berkshire Healthcare NHS Foundation Trust, who then appointed her as the

Regional Director for Berkshire West, leading on the delivery of community, mental health and learning disability services for a population of more than 500,000 people. She has extensive Board level experience and has held senior roles in both provider and commissioning organisations.

Covid-19 Summer Boosters

People in Bath and North East Somerset, Swindon and Wiltshire who are eligible for the Covid-19 spring booster vaccine, but have yet to come forward, are being encouraged to go and get their boosters. Having the top-up dose before the end of June will not only provide protection during the summer months, but will also ensure people will be able to receive the autumn booster jab as soon as the vaccines become available.

Currently, people aged 75 and over, as well as care home residents and those aged 12 and above with a weakened immune system, are eligible for the spring booster vaccine. Getting the top-up dose, which for most people will be their fourth Covid-19 vaccine, is the best way to prolong the immune-boosting effects of previous vaccinations, which should keep serious cases of coronavirus at bay.

Spring booster jabs can be booked online at www.nhs.uk. The site also contains up-to-date information on the local venues that are providing the vaccine but do not require patients to have a pre-booked appointment.

Devizes Health Centre

Progress is continuing with the build of the new health centre located in Marshall Road, Devizes. The new flagship centre is due to open in Autumn 2022 and will bring an extensive range of services from several different health and care providers together under one roof.

Devizes Health Centre will be leading the field in sustainable design, as one of a small number of 'Net Zero' health facilities across England. The site will have an energy EPC rating of A+, and will utilise green technology, such as heat pumps and solar panels to generate electricity and heat to serve the building.

As well as replacing the services at the existing Devizes Community Hospital, the centre will house a new on-the-day primary care team and become the home for a range of community-based services, such as blood testing, physiotherapy, audiology, podiatry, diabetes, and mental health.

Redevelopment of the former Devizes Community Hospital

The old Devizes Community Hospital on New Park Road is no longer fit for purpose and healthcare services will relocate to the new £10.9m Health Centre (as detailed above). NHS Property Services is the freehold owner of the old Community Hospital site and is preparing to submit an outline planning application for the redevelopment of the site once all services have relocated to the new facility.

The redevelopment proposals will deliver up to 59 new homes as well as commercial space at a sustainable location close to Devizes Town Centre. The historic hospital buildings on the eastern side of the site, which form part of the town's Conservation Area, will be retained and refurbished as part of the redevelopment proposals.

Before submitting an outline planning application for the redevelopment, NHS Property Services has created a consultation website to provide the community with information about the plans, and to provide an opportunity to provide feedback on the proposals and how it can align with their aspirations for local housing and the redevelopment of this important part of Devizes' Wharf Area on the southern banks of the Kennet & Avon Canal.

More information about the emerging proposals can be found on this link: <https://devizeshospitalredevelopment.com/staging/index.php?contentid=35> and feedback can be submitted by completing a questionnaire here: <https://devizeshospitalredevelopment.com/staging/index.php?contentid=57>

Please ensure all feedback and comments are submitted by 12 noon on Friday 22 July 2022. There will also be a drop-in exhibition to ensure those who are unable to get online have an opportunity to view the plans and have their say. This will take place on 12 July between 2pm and 7:30pm at The Cheese Hall, Devizes Town Hall, St. John's Street, Devizes, Wiltshire SN10 1BN.

Update for Wiltshire Area Boards

August 2022

Winter Planning

As our System continues to experience unrelenting demand challenges and operational pressures, we are continuing to work with our partners to deliver existing demand management and capacity improvement plans. We are monitoring the impact of these plans at both a System and Place level and will take the learning into the development of our plans for the coming winter. One important aspect of our future plans is the delivery of a Virtual Ward model. Virtual Wards allow patients to get the care they need at home safely and conveniently, rather than being in hospital.

Fiona Slevin-Brown, Wiltshire Place Director, is providing Executive leadership across the BSW programme to enable successful roll out of this programme across all three Places.

In addition, our winter plans will encompass the continuation of additional bed capacity to support wider adoption of discharge to assess. Further work to support the timely discharge of patients out of hospital will continue with specific focus on securing additional domiciliary care provision in South Wiltshire. This will contribute to the much needed capacity required to help with the expected challenges for this coming winter period.

Primary Care Update

In March 2022 NHS England published 'Enhanced Access for General Practice' guidelines, the aim is to improve access to GP services outside of core hours.

The new service which goes live from 1st October 2022 will provide more appointments for patients between the hours of 6.30pm – 8pm Monday to Friday, and 9am to 5pm on Saturdays. Details on how this will be delivered at a Primary Care Network and practice level will be communicated directly with local registered patients in the coming weeks.

Connecting with our Communities (CWOC)

The Wiltshire Integrated Care Alliance CWOC work stream is focused on empowering our communities and ensuring their voices are heard through the design and delivery of the work of the Alliance, paying particular attention to inclusion of our most vulnerable and marginalised residents. This workstream will be informed by the latest NHSE guidance outlining the revised legal responsibilities for statutory NHS

organisations <https://www.england.nhs.uk/publication/working-in-partnership-with-people-and-communities-statutory-guidance/>

A CWOC away day is organised for the 30th August at County Hall, with invites being extended to representatives of the Wiltshire VCSE, and local statutory partners. The purpose of the away day is to work towards strong community engagement, including the planning of listening events within various communities within the Wiltshire footprint.

Dr Amanda Webb appointed to Chief Medical Officer

Amanda has served as Swindon Locality Clinical Chair for BSW since 1 April 2020 having previously been a member of the Governing Body of Swindon CCG and Clinical Director for the Brunel 1 Primary Care Network.

She is dedicated to improving population health and wellbeing and to addressing inequities in health and life opportunity for the people of BSW. Amanda has a particular interest in workforce retention and career development and founded the national Phoenix GP Programme.

Amanda trained at both Cambridge and Oxford University, before qualifying as a GP in 2012 and joining Westrop Medical Practice in 2014 with specialist clinical interests in paediatrics and women's health.

The process of appointing a Wiltshire Health Care Professional Lead Role is underway, and details of the successful candidate will be shared when appointed.

Keep up to date

Those wanting to keep up to date with developments with the BSW Integrated Care System can sign up to receive The Triangle - a monthly newsletter about the work of BSW Together. The public facing publication contains a mix of news and updates showing how the BSW ICS is working to improve the health and wellbeing of local people, tackle health and care inequalities and improve services for everyone.

A sign-up form is available here <https://bswtogether.org.uk/news-events/the-triangle/>

Championing what matters to you through difficult times

It's been another challenging year dominated by the consequences of Covid-19, but we've continued to be your champion for health and social care services and make sure your voice is heard by those who plan and run services.

Championing What Matters to You, our annual report, showcases how we've been making a difference during difficult times.

The year in numbers

In the past year (2021-22):

- **4,400** people have shared their experiences with us.
- **7,140** people have accessed our advice and information online or contacted us with questions about local support.
- We have published **12** reports and made **78** recommendations to services to make health and care better in Wiltshire.
- We have **40** volunteers helping us to carry out our work, giving **1,480** hours of their own time.

Looking ahead

As ever the work doesn't stop there. We'll be looking at how our survey, which gathered the views of patients and staff on access to GP services during Covid-19, will bring about improvements to services across the south of England.

Our priorities for 2022/23 are:

- **Primary Care** – continuing the previous year's work.
- **Mental health** – with a focus on



- learning disabilities and autism.
- **Children and young people** – sexual health.
- **Hospital discharge** – exploring the links between discharge and social care.

Catharine Symington, Interim Manager at Healthwatch Wiltshire, said: "Thank you to everyone who has taken the time to share their experiences with us during what has been another difficult 12 months.

"With the introduction of the new Integrated Care System on 1 July, there are lots of changes expected within the health and care system and we want to make sure that local people continue to play a key role in helping to shape services.

"Please keep sharing your experiences with us so that we can champion your views and needs both locally and nationally."

Update for Bradford on Avon Area Board

Name of Parish/Town Council	Bradford on Avon Town Council
Date of Area Board Meeting	7 September 2022

Headlines/Key successes

- Living Green Wall installed in the town centre

- Summer holiday activities for local and Ukrainian children

- Thursday market in the library car park has additional trader support

Projects

- Skateboard park fundraising

- Recipe book available on Town Council website
www.bradfordonavontowncouncil.gov.uk

- Business survey being carried out through Bradford on Avon Business

Forthcoming events/Diary dates

- Great Big Green Event 23.09.22 to 02.10.22

- 15.09.22 to 18.09.22 Heritage Open Days at the town lock up on the town bridge

- 05.11.22 Fireworks – Victory Field will have sellers with items on sale

Signed: Sandra Bartlett Town Clerk

Date: 24.08.22

Update for Bradford on Avon Area Board

Name of Parish/Town Council	LIMPLEY STOKE
Date of Area Board Meeting	12 September 2022

Headlines/Key successes

- PURCHASE OF ADDITIONAL SPEED WARNING CAMERA (now have 3)

- ROLL OUT OF WILDING AND WILDFLOWER AREAS THROUGHOUT VILLAGE. VILLAGE APPEARED ON ITV REGIONAL NEWS AS A RESULT OF THESE ACTIVITIES IN LIAISON WITH LOCAL 'NATURE CHAIN' INITIATIVE

- PARISH COUNCIL REVIEWING RESIDENTS' PARKING IN VILLAGE

Projects

- Awaiting installation of permanent bollards for closure of Woods Hill.

- Collaboration with National Highways on safe places to cross A36

- Speed limit review on Church Lane. Traffic calming measures on Middle Stoke

Forthcoming events/Diary dates

-

-

-

Signed:

Date:

Report To	Bradford on Avon Area Board
Date of Meeting	Wednesday, 07 September 2022
Title of Report	Bradford on Avon Area Grant Report

Purpose of the Report

- To provide detail of the grant applications made to the Bradford on Avon Area Board. These could include; community area grants, health and wellbeing, young person's grants and Area Board initiatives.
- To document any recommendations provided through subgroups.

Area Board Current Financial Position

	Community Area Grants	Young People	Health and Wellbeing
Opening Balance For <u>2022/23</u>	£ 14,160.00	£ 11,528.00	£ 7,700.00
Awarded To Date	£ 7,649.49	£ 0.00	£ 0.00
Current Balance	£ 6,510.51	£ 11,528.00	£ 7,700.00
Balance if all grants are agreed based on recommendations	£ 1,510.51	£ 11,528.00	£ 7,700.00

Grant Funding Application Summary

Application Reference	Grant Type	Applicant	Project	Total Cost	Requested
ABG429	Community Area Grant	Bradford on Avon Rowing Club	Bradford on Avon Rowing Club Boathouse Development	£160000.00	£5000.00

Project Summary:

The aim of the BOARC boathouse development project is to expand facilities in order to accommodate recent and expected increases in: membership, rowing boats, canoes and activities. It is in response to significantly increased membership numbers in the past two years and an influx of younger members. It will provide more attractive facilities to encourage additional membership, especially at the junior and young adult level. It will be in at least two phases, with the storage extension, the subject of this bid, being Phase 1 in 2022.

1. Background

Area Boards have authority to approve funding under powers delegated to them. Under the Scheme of Delegation Area Boards must adhere to the Area Board Funding and Grants Criteria. This document is available on the council's website.

Three funding streams are available to the Area Board, each with an annually awarded amount. These funding streams are as follows:

- Community Area Grants (capital)
- Young People (revenue)
- Health and Wellbeing (revenue)

The Area Board will be advised of the funding available prior to their first meeting of each financial year.

2. Main Considerations

2.1. Councillors need to be satisfied that the applications meet the requirements as set out in the Area Board Funding and Grants Criteria and that the health and wellbeing and young person's funding guidelines have been adhered to.

2.2. Councillors must ensure that the distribution of funding is in accordance with the Scheme of Delegation to Area Boards.

2.3. Councillors need to consider any recommendations made by subgroups of the Area Boards.

3. Environmental & Community Implications

Grant funding will contribute to the continuance and/or improvement of cultural, social and community activity and wellbeing in the community area, the extent of which will be dependent upon the individual project.

4. Financial Implications

Councillors must ensure that the Area Board has sufficient funding available to cover the grants awarded.

5. Legal Implications

There are no specific legal implications related to this report.

6. Human Resources Implications

There are no specific human resources implications related to this report.

7. Equality and Inclusion Implications

Community Area Boards must fully consider the equality impacts of their decisions in order to meet the Council's Public Sector Equality Duty.

Community Area Grants will give local community and voluntary groups, Town and Parish Council's equal opportunity to receive funding towards community-based projects and schemes where they meet the funding criteria.

8. Safeguarding Implications

The Area Board has ensured that the necessary policies and procedures are in place to safeguard children, young people and vulnerable adults.

No unpublished documents have been relied upon in the preparation of this report.

Report Author

Ros Griffiths, Community Engagement Manager, Ros.Griffiths@wiltshire.gov.uk

BRADFORD ON AVON LOCAL HIGHWAY AND FOOTWAY IMPROVEMENT GROUP

	Item	Update	Actions and recommendations	Who
	Date of meeting: 25th July 2022 Virtual meeting			
1.	Attendees and apologies			
	Circulation:	<p>Tim Trimble (Chair) Sarah Gibson – Wiltshire Councillor Johnny Kidney – Wiltshire Councillor Trevor Carbin – Wiltshire Councillor Andy Cadwallader, Kirsty Rose – Highways Ros Griffiths - Community Engagement Manager</p> <p>Atworth Parish Clerk Bradford on Avon Town Clerk Holt Parish Clerk Limpley Stoke Parish Clerk Monkton Farleigh Parish Clerk South Wraxall Parish Clerk Staverton Parish Clerk Westwood Parish Clerk Winsley Parish Council Anthony Smith – Wingfield PC George Mumford – Westwood PC Liz Watts – Monkton Farleigh PC Pauline Adams – Monkton Farleigh PC Jeremy Wire – Streets Ahead Ian Barnes – Limpley Stoke PC John Barnes – Winsley PC Bella Walker – South Wraxall PC Andrew Nicolson – Cycling UK</p>		

BRADFORD ON AVON LOCAL HIGHWAY AND FOOTWAY IMPROVEMENT GROUP

2.	Notes of last meeting		
		Previously circulated	
3.	Financial Position		
		<p>Current amount available including contributions £43,374 Current spend & commitments £29,380 Current remaining budget £13,994</p> <p><u>Allocations made at meeting:</u></p> <p>There were no funding allocations made at this meeting.</p> <p>Remaining budget: £13,994</p>	

BRADFORD ON AVON LOCAL HIGHWAY AND FOOTWAY IMPROVEMENT GROUP

4.	Top 5 Priority Schemes			
a)	<p>South Wraxall PC Bella Walker</p>	<p>Visibility has been checked at the B3109/UC junction. . For 50 mph roads the desired minimum distance is 160m but an absolute minimum of 120m is acceptable.</p> <p>Looking to the North (towards Corsham) 120m was achievable.</p> <p>Looking to the South (towards Bradford Leigh) a distance of 45m only could be achieved due to a bend in the road, a rising bank on the verge and a mature hedgerow.</p> <p>There were no signs of any collision debris in the area, or damage to the verges and no skid marks were apparent on the main carriageway. There has been 2 reported personal injury collisions in the 6years up to April 2020.</p> <p>Document B3109-001 has been circulated to demonstrate the land requirement to achieve full visibility. Regrading of the land may also be necessary.</p> <p>KR to write to SWPC and liaise with Bella Walker. JK to be copied in to correspondence</p> <p>Letter sent to SWPC. Legal have been asked to write to landowner. KR to chase KR to chase legal services letter.</p> <p>BW reported a recent collision involving a car and cyclist at the junction.</p>	<p>Letter re land negotiations has been issued and response received indicating negotiations may commence re: land purchase.</p> <p>KR to progress, along with legal colleagues, and prepare cost estimate for works including costs associated with land as negotiations progress.</p>	KR

BRADFORD ON AVON LOCAL HIGHWAY AND FOOTWAY IMPROVEMENT GROUP

b)	<p>Limpley Stoke PC 2-22-10 Woods Hill, Limpley Stoke Permanent closures measures Ian Barnes</p>	<p>Cabinet member decision made (and published) to make closure permanent. This is now effective. Permanent physical measures are required. Ian Turner is preparing proposal and estimate for Parish Council approval.</p> <p>The Parish Council has budgeted for these measures.</p>	<p>It has been agreed with PC that the permanent closure will be maintained with bollards. The current ballpark estimate being £2000. Ian Turner to confirm design and cost to PC before ordering.</p>	IT
----	--	---	--	----

BRADFORD ON AVON LOCAL HIGHWAY AND FOOTWAY IMPROVEMENT GROUP

<p>c)</p>	<p>Whitehill, Bradford on Avon</p> <p>Also 2-21-7</p>	<p>Request for advertisement of permanent order for no entry following removal of temporary order as part of the social distancing project.</p> <p>TRO advert lead time is likely to be in excess of 10 weeks. Scheme cost, including TRO cost, to be in region of £1500.</p> <p>KR to prepare TRO documents and pass to TRO team. Funding to be discussed by TC and considered at next CATG meeting.</p> <p>Outline proposal provided to group. Total scheme costs in the region of £3800. TRO costs are £1500 of that total.</p> <p>CATG agreed to allocate £750 to this with £750 from BoA TC.</p> <p>To progress to advert</p> <p>To be advertised 11th Feb to 7th March. All interested parties can comment during that period</p> <p>The formal advertisement is complete and objections have been received. This will now be subject to a cabinet member decision report to determine whether or not this proposal will be implemented.</p> <p>The group agreed to allocate funding for the implementation costs, subject to match funding from the town council. £1,150 LHFIFG / £1,150 TC tbc.</p>	<p>The cabinet member report has been drafted and currently being processed. Current recommendation from officer is to proceed with No Entry and short section of waiting restriction opposite 25a/25b, omitting the waiting restrictions proposed at the top of Whitehill.</p> <p>Awaiting cabinet member review and decision.</p>	<p>To note</p>
-----------	---	---	---	----------------

BRADFORD ON AVON LOCAL HIGHWAY AND FOOTWAY IMPROVEMENT GROUP

d)	<p>Westwood Parish Council Speed management – New Inn area George Mumford</p>	<p>Site meeting held previously with KR, JK and Westwood Parish Council . KR provided outline proposal to Parish Council. Request to be considered by CATG</p> <p>CATG agreed to support. KR to prepare plans.</p> <p>KR to complete plans and issue to parish council for consideration.</p> <p>Item to be moved to top priority schemes.</p> <p>KR has provided options for PC to consider (attached).</p> <p>Estimated costs are: Option 1 - £22,000 Option 2 - £41,000 Road Marking and Gateway - £6,000</p> <p>This is to be considered by parish council and brought back to next meeting</p>	<p>The PC would like to take forward Option 1 – additional footway at the junction. This is eligible for a substantive bid to be made.</p> <p>A funding contribution to the bid of £7,000 is needed and is to be made up of contributions from LHFIG and the PC.</p> <p>LHFIG contribution to be confirmed at October meeting. Westwood PC confirmed following this meeting their contribution of £3500 toward the substantive bid.</p>	
----	---	---	---	--

BRADFORD ON AVON LOCAL HIGHWAY AND FOOTWAY IMPROVEMENT GROUP

e)	Bradford on Avon Berryfield Road Streets Ahead	<p>(notes shortened)</p> <p>KR presented plans (enclosed). Estimated costs are £34,000 with an additional £7,500 for Sladesbrook.</p> <p>KR to circulate plans to Louise Walford and discussion to take place regarding consultation with residents and school.</p> <p>CATG agreed funding of £1800 for a topo survey of Berryfield Road to allow detailed design work to progress. KR to order.</p> <p>KR & TT met with school representatives. Positive feedback, particularly re Sladesbrook changes. Would like to see (and can facilitate) consultation with parents and pupils re Berryfield Road changes.</p> <p>Awaiting topo survey to progress design works</p> <p>It was agreed to progress Sladesbrook element separately. CATG agreed allocation of £3750 subject to matched contribution from town council.</p> <p>Topo survey not yet received. Traffic data being collected at start of term.</p> <p>Sladesbrook funding contribution from BoA TC confirmed.</p> <p>Works order to be issued for Sladesbrook element.</p> <p>It was also agreed to set aside a contribution for the substantive bid for works to Berryfield Road of £7000.</p>	<p>Works pack for Sladesbrook being prepared.</p> <p>Topo survey for Berryfield Road has been received and the design will now be progressed ahead of a substantive bid being made.</p>	
----	--	--	---	--

BRADFORD ON AVON LOCAL HIGHWAY AND FOOTWAY IMPROVEMENT GROUP

5.	Substantive schemes			
a)	Station approach – Bradford on Avon	<p>Revised proposals agreed by Town Council. Estimate stands at £61,356 Substantive bid application form submitted. Local contribution of £2,500 from B on A TC, £2,500 from CATG</p> <p>Substantive bid successful. Detail design complete. Scheme is included in 2020/21 works programme but timeline currently unknown.</p> <p>This scheme had been planned for June 2021. It has now been postponed as all works in the Bradford on Avon area have had roadspace bookings revoked during the closure of Cleveland Bridge in Bath. The scheme is to be reprogrammed.</p> <p>Site meeting to take place on 10th Feb to discuss concerns raised by AN.</p> <p>Scheme programmed for construction to commence 25th April 2022.</p>	<p>Works are now complete. Item to be removed from tracker.</p> <p>JW highlighted that some drivers are overrunning the footway.</p> <p>KR is to raise this, along with other issues raised outside of this meeting regarding tactile paving, with the safety auditors for their consideration during the audit.</p> <p>SG asked KR to look at the coloured surfacing as she is concerned about aggregate loss. KR to check and report back.</p>	KR
6.	Waiting Restrictions			

BRADFORD ON AVON LOCAL HIGHWAY AND FOOTWAY IMPROVEMENT GROUP

a)	Winsley – Winsley Hill Canal Bridge and Bradford Road North	<p>Waiting restrictions proposal circulated. The changes to budget arrangements see waiting restrictions fall within LHFIG remit, therefore group to consider support for funding proposals, including TRO advert.</p> <p>Group discussed changes to funding arrangements. WC councillors to make representations to cabinet member and senior officers regarding funding for these restrictions as it is felt that these should be funded centrally as this was originally agreed prior to delays to delivery.</p> <p>The advert cost, which can include Atworth, is £2000 with an additional £1000 per location for implementation.</p> <p>It was agreed to allocate £1500 from LHFIG but to for representations to be made to reduce the funding required.</p>	<p>It has been agreed that the TRO advert cost for the West Wilts villages TRO will be covered centrally.</p> <p>Funding for implementation will need to be from LHFIG &/or PC. £1500 is allocated to date from LHFIG. Winsley PC have declined to contribute based on the age of this request.</p> <p>It is anticipated that the £1500 will cover implementation of both Winsley requests and Mead Park, Atworth should the group wish to proceed on this basis.</p> <p>An updated proposal for Winsley Hill has been provided to PC for their consideration.</p> <p>The group discussed the waiting restrictions and are happy to proceed with TRO advert, subject to additional changes on Winsley Hill (to be confirmed with PC).</p>	
b)	Atworth – Mead Park	<p>As above. TC and PT expressed concerns that the PC should not be expected to contribute as this lining is needed as a result of a scheme implemented through CATG.</p> <p>See notes above re funding. PC have declined contribution based on age and background to request.</p>	<p>Agreed to proceed to TRO (funded centrally) and implementation to be covered by LHFIG (already allocated).</p>	

BRADFORD ON AVON LOCAL HIGHWAY AND FOOTWAY IMPROVEMENT GROUP

c)	Bradford on Avon Town – Outstanding Waiting Restriction Requests	A list of outstanding requests for waiting restrictions has been circulated with the note tracker. TC/LHFIG to determine if requests are still valid and to determine if investigation/TRO advert should proceed.	TC to confirm relevance of outstanding requests and highlight any other additions.	
7.	Other Ongoing Issues			

BRADFORD ON AVON LOCAL HIGHWAY AND FOOTWAY IMPROVEMENT GROUP

a)	Holt	<p>Improvements and widened footway at junction of B3107 and east exit to The Midlands. DT has given feedback to PC on initial design and cost estimate prepared by consultant. PC want WC to take forward design to detail stage with a view to making a substantive bid.</p> <p>Land ownership plan provided to PC. The resident at 180 is content with the proposal to remove some of the scrub and cut in to the bank outside of their property (within the adopted highway).</p> <p>KR has reviewed options and met with parish council reps on site. A proposal has been prepared for footway widening without a retaining wall. A topographical survey is required to progress design further. A quote of £1650 has been returned. Holt PC propose 50/50 funding with CATG. This was agreed.</p> <p>Topo survey received. Substantive bid submitted – documents provided with tracker for information.</p> <p>Await outcome of substantive bid.</p> <p>The substantive bid has been successful for funding in the 2022/23 financial year.</p> <p>Design works is to be progressed to form works package for construction.</p>	<p>Design works underway. A TRO will be required for parking restrictions and proposed 20mph speed limit. Parish Council will be informed of dates for this when available.</p> <p>Works programmed for construction in <u>January 2023</u></p> <p>KR to send information to parish council via the PC Chair.</p>	KR
----	------	--	---	----

BRADFORD ON AVON LOCAL HIGHWAY AND FOOTWAY IMPROVEMENT GROUP

b)	<p>Monkton Farleigh PC Liz Watts/Pauline Adams</p>	<p>Speed limits in the village. LW presented case for lower speed limits in village. DT advised of adopted process of using Atkins for a speed limit assessment. Cost is £2500. Funding agreed in principle 50/50 PC & CATG</p> <p>Additional information supplied to PC. Awaiting decision from PC as to whether to go ahead</p> <p>PC confirmed decision to proceed with assessment but will be put on hold until meeting with Atkins/KR can take place.</p> <p>Site meeting held with Atkins and PC in April.</p> <p>Assessment to be progressed by Atkins.</p> <p>KR investigated speed limit orders in the village as discrepancy between in-car systems and signing. The orders are all correct however it would appear there is no obligation on the sat nav companies to ensure information is correct.</p> <p>Liz and Pauline highlighted the walking routes in the village and the difficulty of arranging a safe circular route for a recent event due to the speed of the village roads.</p> <p>Atkins report has been issued and is included with this tracker for circulation.</p> <p>The Parish Council supports recommendations for section 4 but is disappointed in the other recommendations made and the overall content of the assessment. Cllr Kidney concurs.</p> <p>KR to arrange meeting with PC and JK to discuss assessment further.</p>	<p>Meeting held to discuss Atkins data and report. KR to undertake review of data and review recommendations.</p> <p>Review of section between A363 and 30mph terminal to include consideration of other options to improve actual and perceived safety for vulnerable road users.</p>	KR
----	--	--	--	----

BRADFORD ON AVON LOCAL HIGHWAY AND FOOTWAY IMPROVEMENT GROUP

<p>c) Winsley Issues Johnny Kidney</p>	<p>JK set out current community actions. Priority is Dane Rise & Tying Road junctions and identification of low cost measures. KR to continue to offer advise prior to bringing forward to CATG.</p> <p>KR and JK met on site to discuss issues. KR recommends data collection in the first instance to determine pedestrian numbers, vehicle speeds, volumes and possibly turning movement. A quote is being sought for this. KR will also undertake visibility assessments at the junction leading on to the B3108 and review signing on the route.</p> <p>JB expressed concerns over the Hartley Farm application and the lack of requirement for the farm to contribute to improving pedestrian access/safety. The PC is very much in support of the farm shop but it should be recognized that they are the attractor of much pedestrian and vehicle activity.</p> <p>KR to raise Hartley Farm application with highways DC again with additional feedback from PC. Progress visibility survey and sign review. Secure quotes for surveys.</p> <p>KR and JK met with cabinet member at B3108. Additional surveys (turning movements and journey time/speeds) have been undertaken. The data has been received and awaiting analysis to determine action regarding extension of the speed limit and any changes to the junctions.</p> <p>JB reported that Hartley Farm are to surface the footpath through their property which will make a more suitable off road route for pedestrians in all weathers.</p>	<p>KR explained that data analysis has been undertaken and recommendations are being prepared. This is to be compiled into a briefing paper for circulation once agreed with the Cabinet Member.</p>	<p>KR</p>
--	---	--	-----------

BRADFORD ON AVON LOCAL HIGHWAY AND FOOTWAY IMPROVEMENT GROUP

d)	Winsley to BoA Tranche 1 cycle scheme	<p>Previous notes removed – see April tracker.</p> <p>Site meeting has taken place Cllrs Trimble, Kidney, Gibson and ADN to discuss proposed scheme and consider options put forward by ADN.</p> <p>Scheme now programmed for construction in Summer 2022. Information has been provided to the parish and town council outlining the preliminary design and scheme extents.</p> <p>The work will be undertaken in 3 phases with the 3rd phase requiring a 6 week closure of the B3108. Mitigation measures to deal with the impact upon this are to be put in place, including additional signing on adjacent routes, replacement passenger transport services and liaison with local businesses is underway regarding access needs.</p> <p>Further information is available on the Wiltshire Council website under Highways / New Active Travel Schemes.</p>	Works now underway and running to programme.	To note
e)	Wingfield PC Anthony Smith	<p>Renewal of footway at former Council Houses on B3109. Previous cost estimate £8466. Revised cost estimate £8873. 50% contribution agreed from centrally held funds</p> <p>It was agreed to defer this to next financial year at the request of the PC.</p> <p>KR to check funding status with Diane Ware.</p> <p>Item to be moved to other schemes list. Diane Ware confirmed fundng can carry over to 22/23. Scheme to be put on hold</p>	<p>Revised estimate of £8,869.35 with 50% funding available from Major Maintenance. PC to confirm 50% contribution.</p> <p>Parish Council to consider their contribution at next meeting.</p>	PC

BRADFORD ON AVON LOCAL HIGHWAY AND FOOTWAY IMPROVEMENT GROUP

f)	Wine Street, Bradford on Avon	<p>(note shortened) Improve ped safety by:</p> <ul style="list-style-type: none"> • Make Wine Street 'Access Only' for residents and relevant services. • Make Wine Street a 20 mile per hour speed limit (although most residents feel a 15 mile per hour speed limit would be more appropriate) and potentially introduce other mechanisms to slow the traffic, either by giving priority to pedestrians over vehicles or introducing speed bumps or other traffic calming measures, in keeping with other areas in the town. • Revert to enforcing a 'no right turn' at the end of Newtown in combination with cameras to assure compliance and a 'No Access to the Town Centre' sign placed at the top of Wine Street. <p>CATG would like to investigate options. KR to review</p> <p>SG highlighted that previous changes to parking were not favoured by residents and changes may not be popular with all.</p> <p>ADN asked that a fair approach be taken with consideration to all. Also highlighted locations in Newtown that are narrow and could have priority working introduced to allow for footway improvements.</p>	<p><u>To be put on hold</u></p> <p>A prohibition of motor vehicles, except for access, would be appropriate to replace the current 3T weight restriction.</p> <p>The cost of advertising this is £2000 for progressing the associated TRO.</p> <p>Implementation costs will be in the region of £1200.</p> <p>A change in speed limit, along with introduction of calming measures, is not considered to be appropriate. Vehicle speeds are constrained by width and parking. A reduced speed limit is unlikely to reduce speeds further. Traffic calming would not be feasible given the gradient, width, accesses and parking on Wine Street.</p> <p>The provision of a 'No Right Turn' on Newtown may be considered as part of the wider review of the town and in light of this review should not be considered as a standalone item.</p> <p>AC asked for the inclusion of waiting restrictions on the bend as there are issues with the gully tanker etc being able to access.</p> <p>KR also to review if an exemption to the one-way for cyclists may be included.</p> <p>The group allocated £3200 subject to TC contribution (£1600 LHFIF / £1600 TC)</p>	KR
----	-------------------------------	--	---	----

BRADFORD ON AVON LOCAL HIGHWAY AND FOOTWAY IMPROVEMENT GROUP

g)	Bradford Road, Atworth	<p>The entrance to the village on the Bradford Road is signed as a 30-mph zone and there is a painted road sign to Slow Down. The road bends sharply to the right and almost immediately is alongside Churchfields Primary School. Even if the traffic slows down to 30 mph at this point, it is still going too fast to ensure the safety of any pedestrian/children using the pavement or crossing the road.</p> <p>We are requesting a 20-mph limit at the entrance to the village on the approach to the school entrance and down the Bradford Road, to ensure the safety of children and parents walking to and from the school.</p> <p>CATG agreed to support at 20mph speed limit assessment in this location and to provide 50% of the funding, to be matched by the parish council. This is a total of £2500 therefore £1250 each.</p> <p>Parish Council contribution confirmed. Await outcome of assessment.</p>	Survey data received. Assessment report to be prepared and circulated at end of August for PC consideration.	KR
----	------------------------	--	--	----

BRADFORD ON AVON LOCAL HIGHWAY AND FOOTWAY IMPROVEMENT GROUP

h)	A365 Atworth – Mini-Roundabout	<p>We have an ongoing and increasing problem with speeding traffic along the A365 which dissects the village. There has been a marked increase in the volume of traffic over the past two years, including a higher percentage of HGV vehicles, to the point where we have serious concerns about pedestrian safety, noise and air pollution.</p> <p>At the moment, traffic approaching the mini roundabout on the A365 from the east actually speeds up on the approach, as there is clear view ahead and obvious priority for main road traffic. We would like Highways to consider extending the shape of the roundabout to the left (not moving it) to create a greater chicane to slow traffic down.</p> <p>Group agreed to investigate feasibility of changes to layout. KR to review.</p> <p>There may be funding available via the planning application relating to a large solar farm. KR to speak with development control.</p>	PC have requested a traffic survey through contractor as a community benefit. Planning permission has been granted.	KR
----	--------------------------------	---	---	----

BRADFORD ON AVON LOCAL HIGHWAY AND FOOTWAY IMPROVEMENT GROUP

i)	Purlpit, Atworth	<p>Almost two years ago, the Atworth Parish Council submitted a requested to Melksham CATG for a dropped kerb crossing at the Bath Road junction and Purlpit . Detail design work was completed and a cost of £7500 was quoted, to include work to relocate a sign, which the Highway Department said was necessary to enable the dropped kerb to be installed . A drawing showing the proposed solution is attached for information. This project was still outstanding in May 2021, at which time Atworth moved from Melksham Without to the Bradford on Avon area. Initially, Melksham CATG kept this on their books but have now decided to close the case, unresolved, and recommend we submit a new request to the B-on-A CATG. It was agreed that KR will revisit this scheme to review proposal and estimate.</p> <p>KR confirmed that funding was not allocated from Melksham CATG previously.</p>	<p>The estimate for the proposed works is accurate however a reduced proposal may be considered. This would include dropped kerbs only, omitting the proposed footway widening with amended dropped kerb positioning.</p> <p>The estimated cost of implementation, including traffic management, is £2500.</p> <p>The group agreed to allocate £1250 to be matched by APC. APC contribution has been confirmed.</p> <p>Dropped kerbs being taken forward by Area Highways for construction.</p>	KR
----	------------------	---	---	----

BRADFORD ON AVON LOCAL HIGHWAY AND FOOTWAY IMPROVEMENT GROUP

j)	Ashley Road, Bradford on Avon	<p>I was hoping to get some understanding from you as to our (local residents) concern why Ashley Road in Bradford-on-Avon Wiltshire, is not a 20 mph zone?</p> <p>St Laurence school children along with a densely populated residential road is heavily used by cyclist, runners and walkers has a 30 mph speed limit. Many vehicles using this road are regularly driving way in excess of that, with no regard for pedestrian safety. There is also access along Ashley road to a children's play area and playing field used by many families and further on, fields used by dog walkers from all over.</p> <p>It appears that every other road with a school on it naturally has a 20 mph speed limit, which of course is appropriate to the environment. Please can you advise as to our question why this is not the case here? It doesn't seem to be rational. Could this now be investigated?</p> <p>Ashley road becoming a 20 mph zone from bath road junction onwards. Traffic survey to be requested to gather speed data</p>	<p>Traffic data has been collected and shows average vehicle speeds of 21mph and 85th %ile speeds of 26mph.</p> <p>KR and TT to discuss traffic surveys for BoA and possible next steps.</p>	KR/TT
k)	Bath Rd, Bradford on Avon	<p>The speed limit is not observed by vehicles on Bath Road. Volume is increasing leading to more pollution and queuing. Lorries are increased and speeding too.</p> <p>Would like the speed limit reduced. Some monitoring of some kind. I am unable to have the windows open due to noise.</p> <p>Traffic surveys to be requested to gather speed data.</p> <p>KR to review visibility of mini-roundabout at junction with Winsley Road.</p>	<p><u>Traffic survey results</u></p> <p>Bath Road 30mph – average speed 27.9mph 85th%ile speed 33.9mph</p> <p>Bath Road 40mph – average speed 35.6mph 85th%ile speed 40.4mph</p> <p>Average 5 and 7 day vehicle volumes similar to those recorded in 2017.</p> <p>Lining at and on the approach to the mini-roundabout is due to be refreshed by Area Highways. This will improve visibility of the roundabout for those approaching.</p>	

BRADFORD ON AVON LOCAL HIGHWAY AND FOOTWAY IMPROVEMENT GROUP

<p>I)</p>	<p>Holt Rd, Bradford on Avon</p>	<p>Request 1: There is a high degree of speeding on the Holt Road from the 30mph limit to the roundabout at New Road. The footway is very narrow and walking along it requires pedestrians to take evasive action as vehicles mount the footway.</p> <p>Signing should be more prominent and the 30mph speed limit extended. Traffic calming measures should also be considered.</p> <p>Request 2: The B3107 as you go out of Bradford towards Holt after the roundabout junction with New Road is far too narrow for cars/vans to pass. The wall on the right hand side should have been moved about 2 to 3 feet away when permission was given for the new estate to be built. The situation was first noticed when a pavement was put in on the left hand side. This pavement is too wide. Mr Moulton brought into Wiltshire Offices about 30 wing mirrors broken off vehicles but as usual Wiltshire was NOT interested. Closing the road to do essential repairs was the perfect opportunity to move the RHS wall back.</p> <p>The Right hand side wall moved back into the scrubland by 2-3 feet. This would make the road safer for all and in particular as there are currently no warnings about the narrowness then visitors to the area are put off coming again particularly if they have had a mishap and lost a mirror or a dent from the wall.</p> <p>AC informed the group that as part of the development, an alternative pedestrian route has been provided to encourage use rather than along Holt Rd.</p> <p>KR to identify any improvements required to highlight this route or improve access to encourage greater use by pedestrians instead of continued use of Holt Road.</p>	<p>There are no improvements to be made to the pedestrian route through the estate, or leading to it, however additional pedestrian signing may be beneficial.</p> <p>Proposal to be prepared showing locations and sign legend to be agreed with town council.</p>	<p>KR</p>
-----------	----------------------------------	--	---	-----------

BRADFORD ON AVON LOCAL HIGHWAY AND FOOTWAY IMPROVEMENT GROUP

m)	<p>Junction of road from Monkton Farleigh Village and A363</p>	<p>Lack of awareness of drivers travelling along A363 towards Bradford-on-Avon of this junction, compounded by speed. Lack of visibility for vehicles turning from Monkton Farleigh lane into fast moving traffic.</p> <p>Reduction of the speed limit on A363 from Parish Boundary before Dry Arch through to existing derestriction zone past Farleigh Wick to 40 mph Visibility is poor when exiting the junction and crossing the road is difficult.</p> <p>KR to review junction to determine if improvements can be made. Visit with PC reps when meeting to discuss the speed limit assessment.</p>	<p>A review of collision data shows that collisions are occurring at the junction involving vehicles waiting to turn right into Monkton Farleigh. These collisions are rear-end shunts and this site is not within the collision cluster list.</p> <p>Visibility when exiting is limited by the road geometry.</p> <p>Direction signing opposite highlights the junction however additional junction warning signing could be provided on the approach from Bradford on Avon. This is in place on the approach from Bathford.</p> <p>The estimated cost of providing the warning sign is £680.</p> <p>The group agreed to fund and allocated £340 to be matched by Monkton Farleigh Parish Council. PC funding to be confirmed following discussion at next meeting.</p> <p>KR to consider if SLOW road markings can be included (additional £300 cost).</p> <p>AC to arrange for tractor to go out to cut visibility splays.</p>	<p>KR/PC</p>
----	--	--	---	--------------

BRADFORD ON AVON LOCAL HIGHWAY AND FOOTWAY IMPROVEMENT GROUP

n)	Winsley Rd, Bradford on Avon (nr Wine Street junction toward Budbury Tynning bus stop)	<p>Footpath, single file, one side only. Used by St Laurence pupils who then cross busy road to use Wine Street. Vision poor and traffic generally too fast. Difficult for parents with pushchairs and young children. Not pleasant for anyone in fact. Buses and heavy vehicles come very close.</p> <p>Would like to see some sort of warning sign to slow vehicles down. Maybe 20mph limit or large SLOW markings on road I both directions.</p> <p>A traffic survey has been requested to gather speed data.</p> <p>KR to review along with Wine Street but also provide estimate for road markings at next CATG The cost of providing 'SLOW' road markings alongside existing warning signs is £300.</p> <p>CATG agreed to allocated £150 subject to matched funding from the TC.</p>	<p>Markings have been ordered as part of ad-hoc lining ticket.</p>	<p>To note</p>
o)	Church St/Bridge St, Bradford on Avon	<p>Dropped kerbs needed to aid mobility at 2 locations;-</p> <p>1) Outside Wellington Hall on north side of Church Street opposite Dutch Barton dental practice (there is a dropped kerb in the pavement on Dentist side). This will improve access to The Hub, and town centre via the Shambles from the McKeever bridge direction.</p> <p>2) On Bridge Street outside Ravello restaurant to improve access to the bus stop and Town Bridge on the upstream (East) side. The pavement at the junction of Bridge Street and St Margaret St. has been flattened by traffic, but it is at the very widest, and hence most hazardous, possible crossing point.</p> <p>KR to prepare proposal and cost estimate following site meeting with TT.</p>	<p>Dropped kerbs can be provided at both locations (1 side only). These would be formed by reusing the existing kerbs and relaying the existing footway slabs. The estimated cost, including traffic management) is £2000 per location therefore £4000 in total.</p> <p>The group agreed to fund this with £2000 LHFIFG contribution subject to £2000 funding from BoA town council.</p> <p>The town council contribution has been confirmed and construction to be taken forward by Area Highways.</p>	<p>AC</p>

BRADFORD ON AVON LOCAL HIGHWAY AND FOOTWAY IMPROVEMENT GROUP

p)	B3109, BoA – from crossroads to Sladesbrook	<p>The current Holt Road closure is exacerbating the existing problem of this narrow road with narrow pavements. 40mph speed limit is too fast. Vehicles are forced to pass pedestrians very close and very fast. They often mount the pavement to avoid collision with other vehicles. The road verge has become overgrown with saplings, making the road narrower than necessary. The pavement is often overgrown with brambles forcing pedestrians closer to the road than necessary.</p> <p>There is no safe place to cross the road to access Christ Church School.</p> <p>(would like to see)Vegetation on road and pavement to be cut back as part of a regular maintenace package.</p> <p>Reduced speed limit and/or traffic calming measures.</p> <p>Wider pavement particularly the stretch up to Leigh Cottage nursery.</p> <p>A pedestrian crossing to access Christ Church School.</p> <p>A traffic survey has been requested to gather speed and volume data.</p>	<p><u>Traffic survey results</u> B3109 40mph – average speed 28.7mph 85thile speed 33.5mph 7 day average daily traffic – 7798</p> <p>KR and TT to discuss BoA traffic survey results and possible next steps.</p>	KR/TT
----	---	--	--	-------

BRADFORD ON AVON LOCAL HIGHWAY AND FOOTWAY IMPROVEMENT GROUP

q)	Millbourn Close footpath, Winsley	<p>Footpath linking Millbourn Close to the “Old Village” in Winsley. This path has become a vehicle route directed by SatNavs.</p> <p>Vehicles endeavouring to use the path (which can be several times a day), if they reach the end by the Church they are confronted with 3 stone bollards. This means they must reverse all the way back to Millbourn Close. This, on a path regularly used by pedestrians, is extremely hazardous.</p> <p>(Would like to see)Installation of signage designating it as a shared cycle / footway CATG supported the proposal and allocated £400 for signing. This is to be matched by Parish Council to total £800.</p>	Order to be issued for signing installation.	KR
r)	Turleigh	<p>Despite signing warning that the route is unsuitable for HGV's, these vehicles and large coaches continue to use Turleigh to travel between BoA and Winsley (or elsewhere). This has resulted in damage to property, including damage to the walls and guttering of Turleigh House. The gas supply pipe into the property is also particularly vulnerable to being struck by larger vehicles. In addition, residents are regularly required to move parked vehicles to allow large vehicles to pass through as they are unable to turn around without additional damage.</p> <p>(would like to see)</p> <ul style="list-style-type: none"> • Improved signing to reinforce the unsuitability for HGV's • Signing and any other protective measures (bollards, utility guard) to prevent further damage to Turleigh House <p>Mandatory weight limit to reduce HGV to access only. KR to provide note for parish council to outline the issue. Next meeting 2nd November KR to provide proposals to parish council/CATG</p>	<p>Proposal prepared to update signing on Cottles Lane, introduce 3no new 'Unsuitable for HGV' signs along with reboundable city pole cones near Turleigh House to prevent building strikes.</p> <p>The estimated cost is £2200 however it is proposed to take this forward as part of the mitigation measures relating to the summer closure of the B3108.</p> <p>Works will be complete before 25th July.</p>	KR

BRADFORD ON AVON LOCAL HIGHWAY AND FOOTWAY IMPROVEMENT GROUP

s)	B3109 Wingfield	<p>Residents concerned regarding increase in number and frequency of collisions the B3109 just outside of Wingfield near to Cedar Tree Lodge and Pomeroy Lodge. Wiltshire Council identified an issue regarding carriageway skid resistance. Remedial works have since taken place however additional signing to highlight the bend, edge of carriageway markings and a change of speed limit are being requested to further reduce collisions in this location.</p> <p>(Would like to see)</p> <ul style="list-style-type: none"> • Erect 'Sharp Corner' signs from both directions (permanent on posts) • Repair the road edge properly, ideally including a kerb to retain the road surface (long term solution) • Paint lines along the road edge to highlight the road extremity to drivers, particularly in the dark. All of the crashes have happened after dark (cost-effective) • Consider reducing the speed limit on this section of the road (ideally; this is a fast road!) <p>The proposal is supported and it was agreed that a review of feasibility would be undertaken and costings prepared.</p>	<p>Proposal and estimate preparation underway. To be provided in advance of next meeting.</p>	
----	-----------------	---	---	--

BRADFORD ON AVON LOCAL HIGHWAY AND FOOTWAY IMPROVEMENT GROUP

t)	2-22-1 From drive ways of Maplecroft Farm estate and Jerico Cottage on the B3105 to A363	<p>Very dangerous section of road when in a car but terrifying when you are walking along the road to join up with the pavement on the A363 to walk to school/town safely. Pavement needed for a safe community from young to old residents. Opportunity could be taken to improve the road safety where an accident happened only last week.</p> <p>(would like) Pavement installed from driveways to meeting of A363 CATG agreed that feasibility of providing a footway is to be investigated.</p>	<p>Feasibility review undertaken. There is insufficient adopted highway land available within the verge area to provide a footway. To construct a footway between the access to the housing and the A363 junction, there would be a need to acquire land either through land dedication or purchase. It would also necessitate the removal of all of the existing trees/vegetation along that section.</p> <p>Residents have been informed and will pursue permissive path through adjacent land.</p>	
u)	2-22-3 Pippets Buildings, Market Street	<p>Due to the narrow nature of Market Street, vehicles, especially vans, lorries and coaches/buses are mounting the pavement and driving along it just outside a row of three small shops in Market St (Cheese Shop, Orton's and Spa shop – numbers 5, 6, 7 and 8 Market St). Due to the pavement being narrow, and the need to queue outside as one of the shops is very tiny and popular, pedestrians and those living and working in Pippett Buildings are endangered by this.</p> <p>A solid bollard on the corner of the pavement, or even 2 or 3 on the kerbside would prevent vehicles from mounting the pavement. Feasibility to be investigated including a review of utility information.</p> <p>CATG are mindful that the outcome of the wider consultation is still pending and may impact upon Market Street.</p>	<p>This is now to be considered as part of wider measures following town traffic consultation.</p>	

BRADFORD ON AVON LOCAL HIGHWAY AND FOOTWAY IMPROVEMENT GROUP

v)	2-22-4 Market Street, BoA	<p>Due to the incredibly narrow nature of Horse's Neck section of Market Street and the narrowness of the only pavement there, various vehicles - including vans, lorries and coaches/buses - are mounting the pavement and driving along it endangering pedestrians. Regular traffic jams due to large vehicles trying to pass each other in this section. Ambulances and fire engines have been held up here.</p> <p>Some kind of bollard or series of bollards on or next to kerb; or yellow box to regulate the traffic.</p>	This is now to be considered as part of wider measures following town traffic consultation.	
----	---------------------------	--	---	--

BRADFORD ON AVON LOCAL HIGHWAY AND FOOTWAY IMPROVEMENT GROUP

w)	2-22-5 Trowbridge Road, BoA	<p>The speed of cars along Trowbridge Road is an issue. The speed limit of 30mph is too high given there is a primary school, nursery and two assisted living centres located on the road. Moreover, many cars do not even stick to this speed given it is a long straight road and it is a common occurrence for vehicles to go through the red lights at the crossing by the plough where children cross to go to Fitzmaurice school. On top of this, the road is too narrow in places for two cars to pass (e.g. outside my own house at 101 Trowbridge Road). This encourages cars and vans to mount the pavement and drive along on two wheels or to come so close to the pavement that the wing mirrors hit pedestrians. I have nearly been hit twice coming out of my house on to the pavement with vans driving up on two wheels and only last week one of the mums was hit by a wing mirror walking to school. Cars mounting the pavement has become more frequent since lockdown with the rise of delivery vehicles which also block the road by stopping with hazards.</p> <p>It is an accident waiting to happen.</p> <p>Finally, to become more sustainable as a town, we need to make our roads safe. There is no way I feel safe enough to cycle out of my house on my own let alone with my children and yet I would love to do this.</p> <p>A variety of measures to reduce speed along the road.</p> <ol style="list-style-type: none"> 1. Introduce a 20 mph speed limit 2. Introduce permanent speed signs to show what speed you are doing (these could be solar powered) 3. Change the road layout so there is a give way at the top of St Margaret's Street to slow cars down from accelerating up the hill and onto the Trowbridge Road (i.e. junction road has right of way) 4. Test a one-way system on Trowbridge Road with traffic flowing one way on junction road and Trowbridge Road and re-joining two way traffic at Moulton Drive to loop back down Frome Road to Junction Road. This would also have the benefit (hopefully) of reducing the number of idle cars causing air pollution which is a big risk to human health and especially children. This could be monitored during the trial period. 	<p><u>Traffic survey results</u> Trowbridge Road – average speed 26mph 85thile speed 31mph 7 day average daily traffic – 7319 5 day average daily traffic – 7725</p> <p>There was a recent nighttime collision with a vehicle striking a parked car which then mounted the footway. Residents report a night time speeding issue. Enforcement of this was discussed.</p> <p>KR and TT to discuss outcome of BoA traffic surveys and possible next steps and report back. Group queried whether a 20mph speed limit assessment in this area would be appropriate. KR to review and advise.</p>	KR
----	-----------------------------	---	--	----

BRADFORD ON AVON LOCAL HIGHWAY AND FOOTWAY IMPROVEMENT GROUP

x)	2-22-7 Winsley Road, BoA	<p>Would like a bus shelter on Winsley Road opposite the junction with Huntingdon Street. This stop has no shelter and nowhere to wait in poor weather.</p> <p>CATG agreed to determine feasibility and cost. Maintenance costs would need to be borne by the Town Council.</p>	<p>The provision of a shelter would impact upon visibility to and from pedestrians waiting to use the Zebra crossing and would also likely impact upon the maintenance of the adjacent building wall. It is not felt that providing a shelter here is feasible.</p> <p>The TC have updated the resident.</p>	To note
y)	2-22-11 Atworth – NAL Socket Installations (for SID)	<p>This request is submitted on behalf of, and has been agreed by, Atworth Parish Council and has been verbally approved by the Highway Department (reference Kirsty Rose). The Parish Council has already purchased one Speed Indicator Device and are considering purchasing another. To enable the siting of these devices in the most effective locations along the A365, we wish to have two NAL sockets installed, with poles, at favourable sites along the Bath Road.</p>	<p>Site meeting has been arranged with Martin Rose (Area Highways Manager). To be taken forward by Area Highways</p>	To note
z)	2-22-12 Middle Stoke, Limpley Stoke – Village Gates	<p>Limpley Stoke Parish Council would like to mark the entrances to the village more obviously by the addition of village gates. The aim being to identify clearly that vehicles are entering a residential area where there will be pedestrians. Vehicles at this point are leaving a 60 mph stretch and so additional reminders we feel are essential.</p>	<p>The group agreed this could be progressed. KR to allocate resources to provide proposal and cost estimate.</p>	KR
8.	New items			

BRADFORD ON AVON LOCAL HIGHWAY AND FOOTWAY IMPROVEMENT GROUP

a)	2-22-13 New Road Bradford on Avon – Formal Crossing and 20mph Speed Limit Request	<p>Issue: Heavy traffic, limited visibility and high pedestrian footfall has made a formal crossing on New Road essential for pedestrian safety. Regular near-misses are seen by residents, often involving school children (the route is a significant walking route for Christ Church and St Laurence pupils). This is especially the case towards the middle of the route, opposite New Road Express store. The nearest formal crossings are at Mount Pleasant (more than 200m westbound) and Holt Road (nearly ½ mile east/southbound). Although there is a pedestrian island at the Texaco garage on the Woolley Street junction, the refuge is insufficient and cars rarely stop. A collision is only a matter of time.</p> <p>Request: 1. A formal crossing was designed as part of the traffic mitigation measures during the social distancing scheme and its one-way system. A formal crossing at the Highfield / New Road Express area is highly desirable regardless of the outcome of the traffic consultation.</p> <p>2. A 20mph speed limit throughout the town, including Bath Road, Mount Pleasant, Sladesbrook, New Road, Springfield, Holt Road, Silver Street, Market Street, Masons Lane.</p>	The group supported this request but felt that it should be put on hold until a decision has been made by WC/ Cllr McClelland regarding the overall traffic in BoA.	To note
b)	2-22-14 Leigh Road, Bradford Leigh	<p>Issue : Vehicles driving at dangerous speeds in a location where pedestrians and other vulnerable road users share a route including children walking to school.</p> <p>Request : 1) Clearly mark pedestrian walkway and with pedestrian symbols to clarify safe pedestrian route (near Old Plough pub)</p> <p>2) A clear and visible sign requesting ‘ please drive slowly’.</p>	KR to review and report back.	KR

BRADFORD ON AVON LOCAL HIGHWAY AND FOOTWAY IMPROVEMENT GROUP

c)	2-22-15 Double Bends on the B3109 between Bradford Leigh and South Wraxall	<p>Issue: Although these bends have warning signs and are marked with chevrons there are many accidents. I am not aware of any serious injuries or loss of life in these accidents and hence there may be no record of these accidents. However, it is clear that vehicles leave the road on a regular basis in both north and southbound directions. These accidents often leave the chevrons damaged and in need of repair. The accidents happen so often that it is unusual to have a full set of serviceable signs in place. Currently there are damaged signs in both directions</p> <p>Request: Please can you consider providing more warnings to the approaching traffic? I suggest that “Max Speed 20mph” plates and additional double bends warning signs. Rumble strips could also be added on the road with additional “SLOW” warnings</p>	<p>It was clarified that this is the area near Heywood Pool. It was reported that there are frequent collisions. The PC would be concerned about use of rumble strips due to noise. The group suggested improved road markings may be more beneficial than signing as it is felt they have more impact.</p> <p>KR to review and report back.</p>	KR
9.	Any Other Business:			
a)				
10.	Date of Next Meeting: 10th October 16:00			

Bradford on Avon Community Area Transport Group

Highways Officer – Kirsty Rose

BRADFORD ON AVON LOCAL HIGHWAY AND FOOTWAY IMPROVEMENT GROUP

1. Environmental & Community Implications

1.1. Environmental and community implications were considered by the CATG during their deliberations. The funding of projects will contribute to the continuance and/or improvement of environmental, social and community wellbeing in the community area, the extent and specifics of which will be dependent upon the individual project.

2. Financial Implications

2.1. All decisions must fall within the Highways funding allocated to Bradford on Avon Area Board.

2.2. If funding is allocated in line with CATG recommendations outlined in this report, and all relevant 3rd party contributions are confirmed, Bradford on Avon Area Board will have a remaining Highways funding balance of **£13,994**

3. Legal Implications

3.1. There are no specific legal implications related to this report.

4. HR Implications

4.1. There are no specific HR implications related to this report.

5. Equality and Inclusion Implications

5.1 The schemes recommended to the Area Board will improve road safety for all users of the highway.

6. Safeguarding implications

Bradford on Avon LHFIF - Parking restriction requests

Bradford (Town) was last reviewed in 2019, implemented in 2020				
Road	Issue/request	Year submitted	Existing restrictons in the area?	Notes/other considerations
Berryfield Road	Extend existing restrictions to aid visibilty and prevent obstruction	2022	✓	Parking prevents right of access - makes sense to extend existing restriction.
Culver Road	Junction parking and obscured visibility	2021	✗	Vehicles parking too close to the Trow Rd junction, so causing obstruction to visibility and forward vis for drivers waiting to ingress from/engress onto Trowbridge Road
Kennet Gardens	Extend existing restrictions to aid visibilty and prevent obstruction	2021	✓	We protected a good portion of KG last time, seems issue has shifted further into the estate - merits further investigation
Lamb Yard	Request for layby opposite the Co-Op to be loading only	2020	✓	Sounds like a reasonable request - check adopted status
Luccombe Quarry	Extend existing restrictions to aid visibilty and prevent obstruction	2020	✓	Visibility from the access isnt great - any extension of DYLs would reduce on-street parking space
Moulton Drive	Extend existing restrictions to aid visibilty and prevent obstruction (2m requested)	2020	✓	Check records - believe we removed some before and now the request is for more?
Springfield	Restrictions at junction and inside of the bend to aid visibility	2020	✓	Aware that it's a Bus route also - visibility is poor on inside of bend anyway, compounded by parking

